

# Sunón

## Headquarter & Experience Center

Add: Sunon Central Business Building, No.200 Shimin Street, Qianjiang CBD, Hangzhou, Zhejiang Province, China

## Russia Branch & Experience Center

Add: Sky Masnion, No.118 Varshavskoe Road, Moscow

## European R&D Center

Add: Brunnenstrasse 156, 10115 Berlin, Germany

## USA Headquarter & Experience Center

Add: 525 Technology Drive Suite 150 Irvine CA.92618, USA

## India Branch & Experience Center

Add: Floor I & II, 643, Rd Number 36, Aditya Enclave, Venkatagiri, Jubilee Hills, Hyderabad, Telangana 500033, India

    @sunonfurniture

[www.sunonglobal.com](http://www.sunonglobal.com)

[info@isunon.com](mailto:info@isunon.com)



H5

# Sunón

A white ergonomic office chair is positioned on a large, dark rock in the foreground. The chair is viewed from a side profile, showing its mesh backrest, armrests, and five-wheeled base. The background is a vast, blue-tinted landscape with rolling hills and mountains under a clear sky. The water in the foreground is calm, reflecting the light. The overall scene conveys a sense of tranquility and connection with nature.

*Cloud-Like Comfort*  
*Healthy Posture Always*



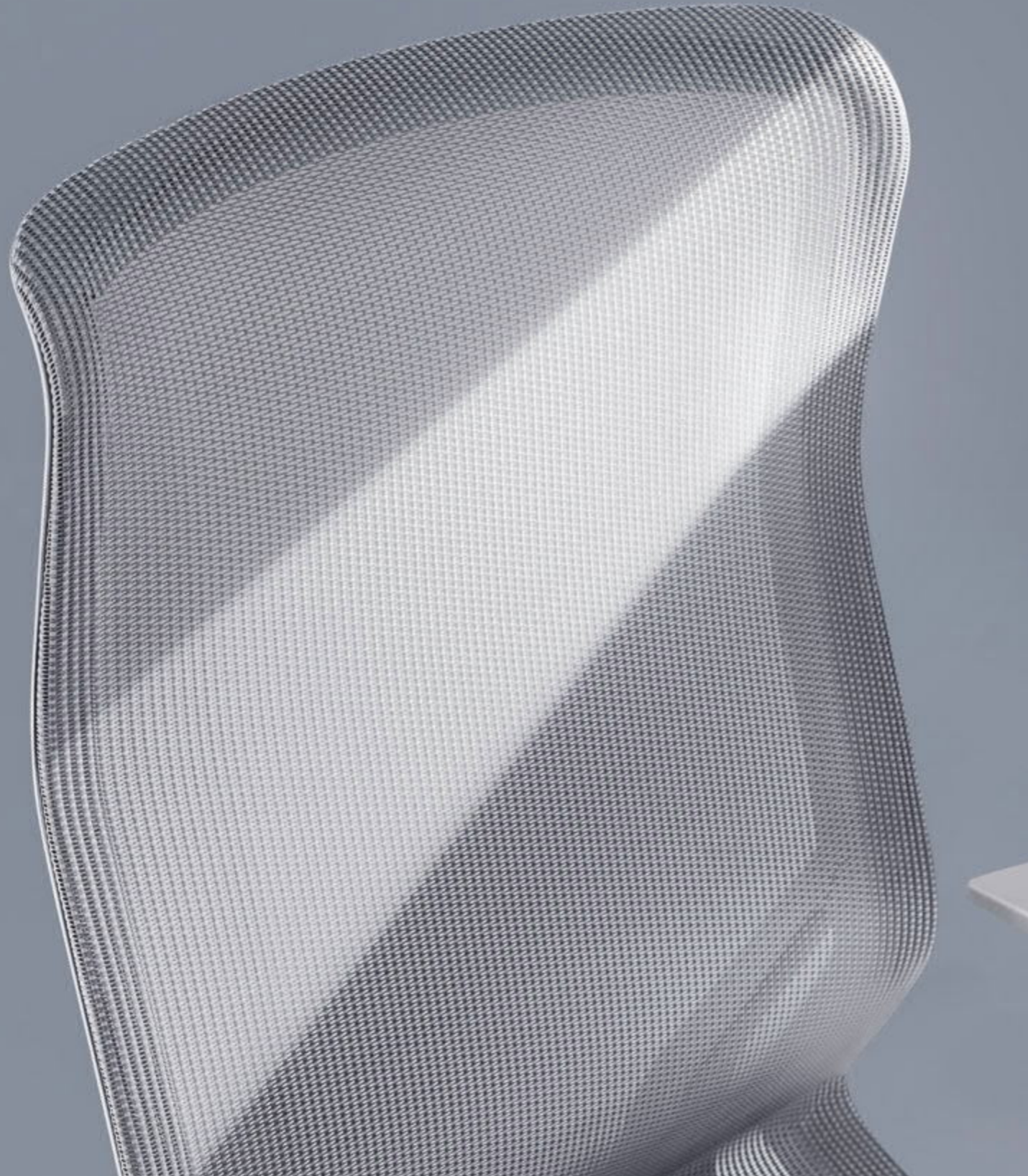
**Comfort to the Edge**  
You can completely relax and enjoy laziness from your neck to your hips.



# *Relieved !*

## **You Will Forget You Are Sitting in a Chair**

The integrated chair structure externalizes the contours of the spinal column, and is designed in a structured way based on the golden curves of the neck, shoulders, waist, hips, and legs, providing a differentiated sensory experience of "fitting, supporting, and pulling" for the entire spinal column. This allows the muscles of the body to be fully relieved of pressure, and from the moment of sitting down, one can feel as if gravity has been forgotten.



# *Flexible*

Self-adjusting